

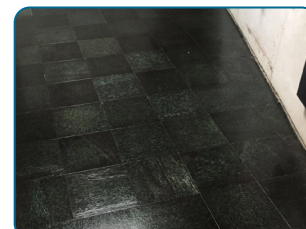
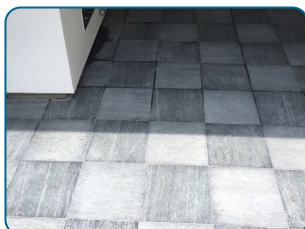
# Finalit No. 11

## Grease and Wax Remover



- removal of stains from grease, oil or wax
- removal fatty residues of silicone joints
- removal of wax from tombstones / grave lanterns

- special cleaner, pH-value: not applicable
- apply undiluted
- 1kg cleans up to 5m<sup>2</sup>, depending on the degree of soiling



### 1) The product – Finalit No. 11 Grease and Wax Remover



#### a) Materials

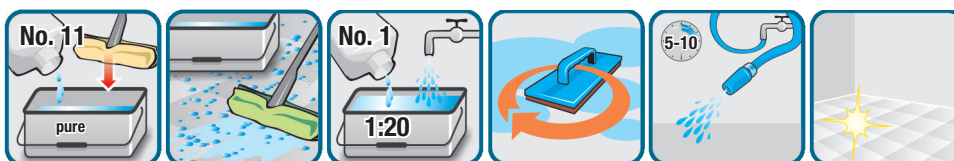
Finalit No. 11 Grease and Wax Remover is suitable for all materials. Soft stones such as marble, lime stone, sand stone or terrazzo can **NOT** be etched by the product.

**Attention!** Finalit No. 11 Grease and Wax Remover releases solvent vapors. Switch off electronic devices and keep the product away from open fire. Ensure the supply of fresh air in closed rooms and do no light cigarettes. By adding about 20% of Finalit No. 1 Intensive Cleaner to the product the inflammatory effect can be reduced significantly.

#### BEFORE STARTING TO WORK

- Take pictures of damages caused by daily cleaning and the use of the premises, starting at the door, running clockwise.
- The bottom of wooden pieces of furniture (e.g. door frames) must be siliconed with transparent silicone, otherwise it may be damaged by water or detergent. Use special acid-resistant plastic tapes that do not cause adhesive residues!
- Already existing coatings have to be removed completely with Finalit No. 5 Coating Remover or with a low-odor mixture of Finalit No. 1 Intensive Cleaner, No. 5 Coating Remover and No. 39 Compact (1:1:1) before working on the stain removal. Otherwise the cleaners cannot work effectively! Sometimes coatings are not visible. Perform tests with a) a blade („sca-rape“) or b) spill water - if the water drips off, the surface is coated.
- Switch off floor heating systems!

#### b) Application



- apply Finalit No. 11 Grease and Wax Remover undiluted
- stubborn stains: pre-clean with Finalit No. 1 Intensive Cleaner, let set overnight
- rinse with water thoroughly
- shake the product before use, apply with a spatula
- let set for about 30 minutes - the product changes its appearance to a white powder after about 15 minutes
- **neutralization:** apply Finalit No. 1 Intensive Cleaner (diluted with water at a 1:20 ratio)
- let set for about 5-10 minutes, rinse with water thoroughly
- repeat the process if necessary
- residues and slight discolorations can be removed with Finalit No. 12 Stain Killer
- rinse with water thoroughly
- **neutralization:** apply Finalit No. 1 Intensive Cleaner (diluted with water at a 1:20 ratio)
- let set for about 5-10 minutes, rinse with water thoroughly

## 2) Pro tips for Finalit No. 11 Grease and Wax Remover



### a) Increasing the efficiency

To increase the efficiency of Finalit No. 11 Grease and Wax Remover, add 20% of Finalit No. 1 Intensive Cleaner. Additionally, the inflammatory effect of the product can be reduced significantly.

### b) Application for strong absorbent materials

On strong absorbent materials, the cleaning process with Finalit No. 11 Grease and Wax Remover has to be repeated twice at least. The treated areas have to be neutralized with Finalit No. 1 Intensive Cleaner, diluted with water at a 1:20 ratio.

### c) Removal of grease stains on walls or candle wax

In order to remove grease stains on walls (e.g. in kitchens) or candle wax on tombstones or grave lanterns it is recommended to apply a compress to ensure satisfying results.

### d) Removal of grease from strong absorbent materials

If a mixture of Finalit No. 11 Grease and Wax Remover and Finalit No. 1 Intensive Cleaner (20%) is applied on strong absorbent materials, the solvent of Finalit No. 11 sinks deeply into to stone and causes humidity stains. The drying process takes up to 48 hours and the stains are nothing to worry about.

## 3) Specification



Appearance	pasty, whitish
pH value	not applicable
Packaging	0,25kg, 0,8kg, 3kg tin cans
Storage	Protect from frost. Recommended shelf life: 1 year after opening.

## 4) Security regulations



The common precautions when handling chemicals must be observed. Ensure good ventilation/extraction at the workplace. Prevent formation of aerosols. Keep away from food, beverages and animal feed. Remove soiled and contaminated clothing immediately. Wash your hands before breaks and when work is finished. Avoid any contact with eyes and skin.

## 5) Note



This product information is based on careful laboratory tests and extensive practical experience. These are informal details. We recommend to determine whether the product meets the respective needs by sufficient testing. Our company shall not be held responsible for damages resulting from improper use of the product.